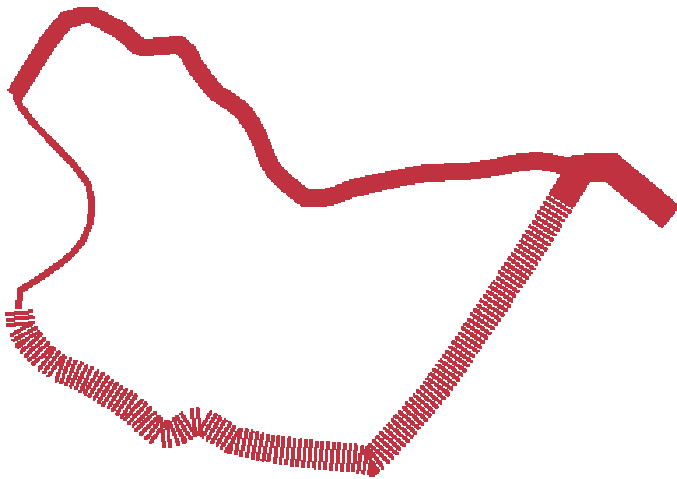


KNYSNA LINK

PROPOSAL

May 2013



Extending the community environment.



INTRODUCTION

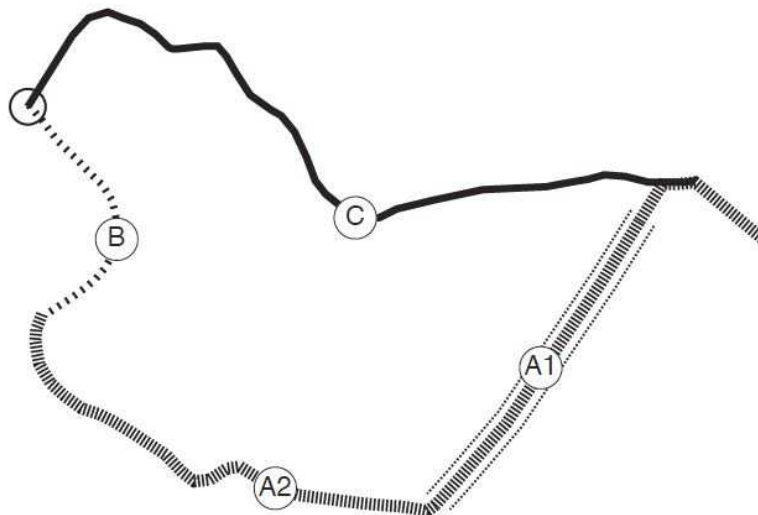
Knysna used to be host to the Outeniqua Choo Tjoe Service which was the last remaining steam driven commercial passenger train in South Africa. The service ran between George and Knysna. In 2007 the service was suspended and the Outeniqua Transport Museum opened.

The Choo Tjoe offered its passengers a unique, picturesque and scenic 52-kilometre journey experiencing the Garden Route with spectacular views of the Indian Ocean and surrounds.

UrbanWorks, an Urban Design & Architectural Studio based in Johannesburg and Parts & Labour, a cultural project management company, would like to propose the repurposing of the decommissioned railway line to create a 14km circular walkway along the Knysna Lagoon.

The Knysna Link will connect the Knysna CBD from the Waterfront to Belvidere Estate and back to Knysna via the following stages.

- A.1) Waterfront to the West Head – along the decommissioned train bridge
- A.2) West head to Belvidere Estate – along the terranean train track
- B) Belvidere Estate to the N2 White Bridge - along the Brenton-on-Sea tar road.
- C) N2 to the Waterfront – along the existing N2 paved walkway.



It is our understanding that Transnet and the MEC for Finance, Economic Development and Tourism for the Provincial Government of the Western Cape have been in discussions regarding the upgrade to the George – Knysna Railway line, which was severely damaged in 2006 due to flooding, and that it is their intention to unlock opportunities along this route.



OUTLINE OF INTERVENTION IN CONTEXT

BASIC NUMBERS

Railway Walkway Upgrade = ±7.0km
 Road Walkway Upgrade = ± 2.0km
 Existing Walkway (N2) = ±5.2km
 Total = ±14.km (±2 hour walk)

Typical width of walkway = 2,0m

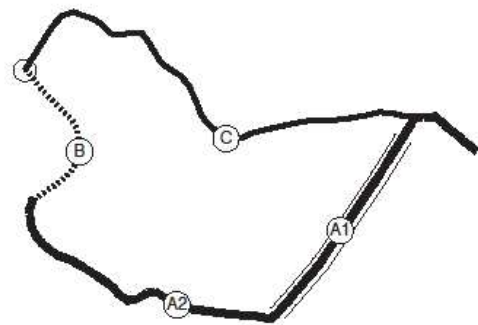


REGIONAL CONTEXT

BASIC COMPOSITION OF THE LINK

The link comprises the appropriation of the following existing segments:-

- A1. BRIDGE TRACK. Appropriated tracks over water.
- A2. TRACK SEGMENT. Appropriated decommissioned tracks on ground.
- B. BRENTON-ON-SEA SEGMENT. Pathway alongside existing road which connects N2 and TRACK segments.
- C. N2 SEGMENT. Pathway alongside existing road.



PROJECT DESCRIPTION

The Knysna Link is simply conceived as

- The upgrading the railway line between Knysna and Belvidere Estate by building a walkway on top of the existing railway track.
- The upgrade of the tar road from Belvidere Estate to the N2's White Bridge to include a pedestrian walkway.
- The use of the existing N2 walkway from the White Bridge to the Knysna CDB

The Knysna Link may also connect and create tributary pedestrian routes that connect suburbs within Greater Knysna, for example ;

- The paved walkway from the Waterfront to Leisure Island (existing)
- Paved walkway from Waterfront to Thesen Island (existing)
- Pedestrian walkway upgrade from the Waterfront to the Informal Settlement along Gray St.

A further ambitious stage to the project could include the extension the proposed pedestrian Link from Knysna to George along the existing 52km railway line.

The aim of the Link is to create a multipurpose track for Knysna residents and visitors to use. Activities along the walkway may include the following:

Recreational Sports

- Walking
- Running
- Fishing

Nature Walks

- Bird/ Animal watching
- Zoology

Commuting

- Establishing a pedestrian route between Knysna, Belvidere Estate, Phantom Pass and the Informal Settlements.

The Link may also host a number of signifiers which could form part of an Open Air Museum that may include:

- Historical narratives about Knysna's history.
- Narratives which explain the different fauna and flora found along the Link
- Land art and sculpture installations both permanent and temporary
- Markers every 10m, 100m and 1000m for sport enthusiasts.

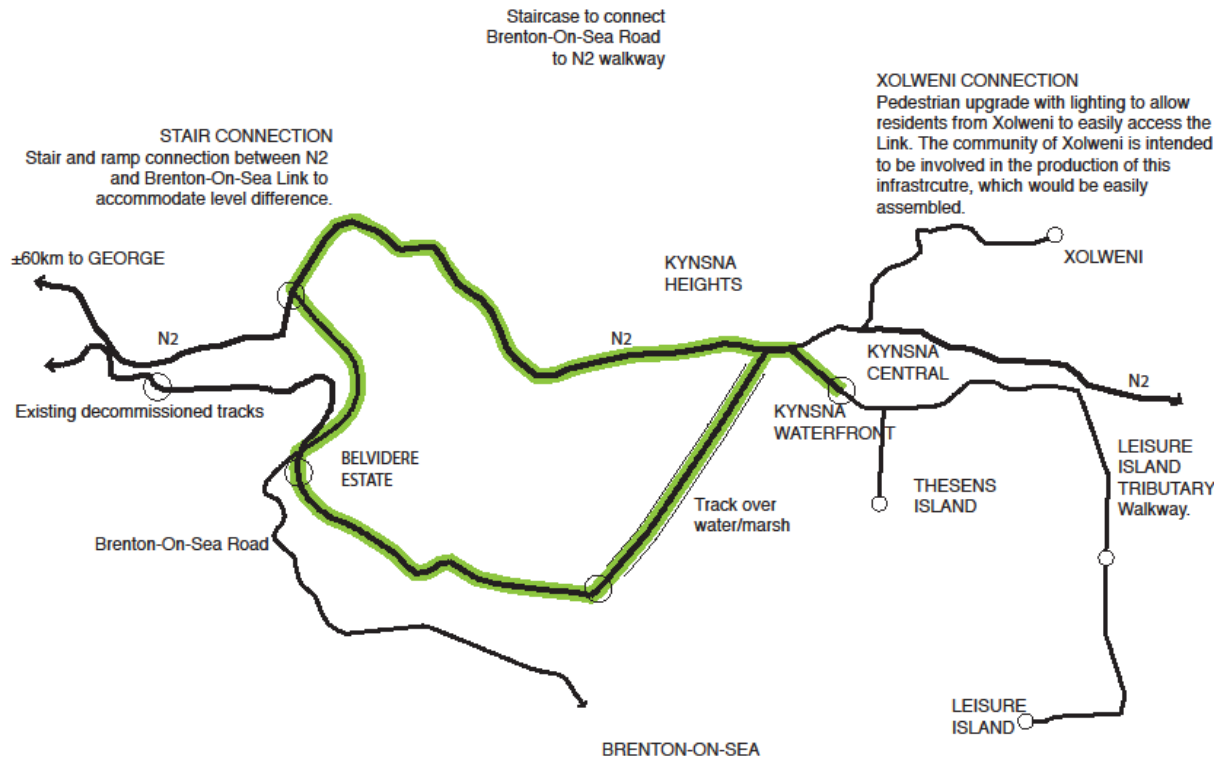
PURPOSE

The projects sets out to utilize and upgrade the city's existing infrastructures to create a community asset that will benefit the residents of Knysna through the creation of an environment that will :

- stimulate the economy through temporary job creation
- provide health benefits to the community through the establishment of an outdoor athletics track
- creation of a safe pedestrian transport circuit within the Greater Knysna area. (walking / cycling route)
- stimulating economic growth along the Link by establishing small businesses at selected pedestrian nodes / pause areas.
- creation of a scenic tourist route around the Knsyna Lagoon which includes magnificent scenery and an Open Air Museum.

Part of the project aim is to create greater public cohesion and social sustainability through the creation of public spaces or common grounds, the up-skilling of the local labour force and the use of sustainable & green building materials.

THE SITE



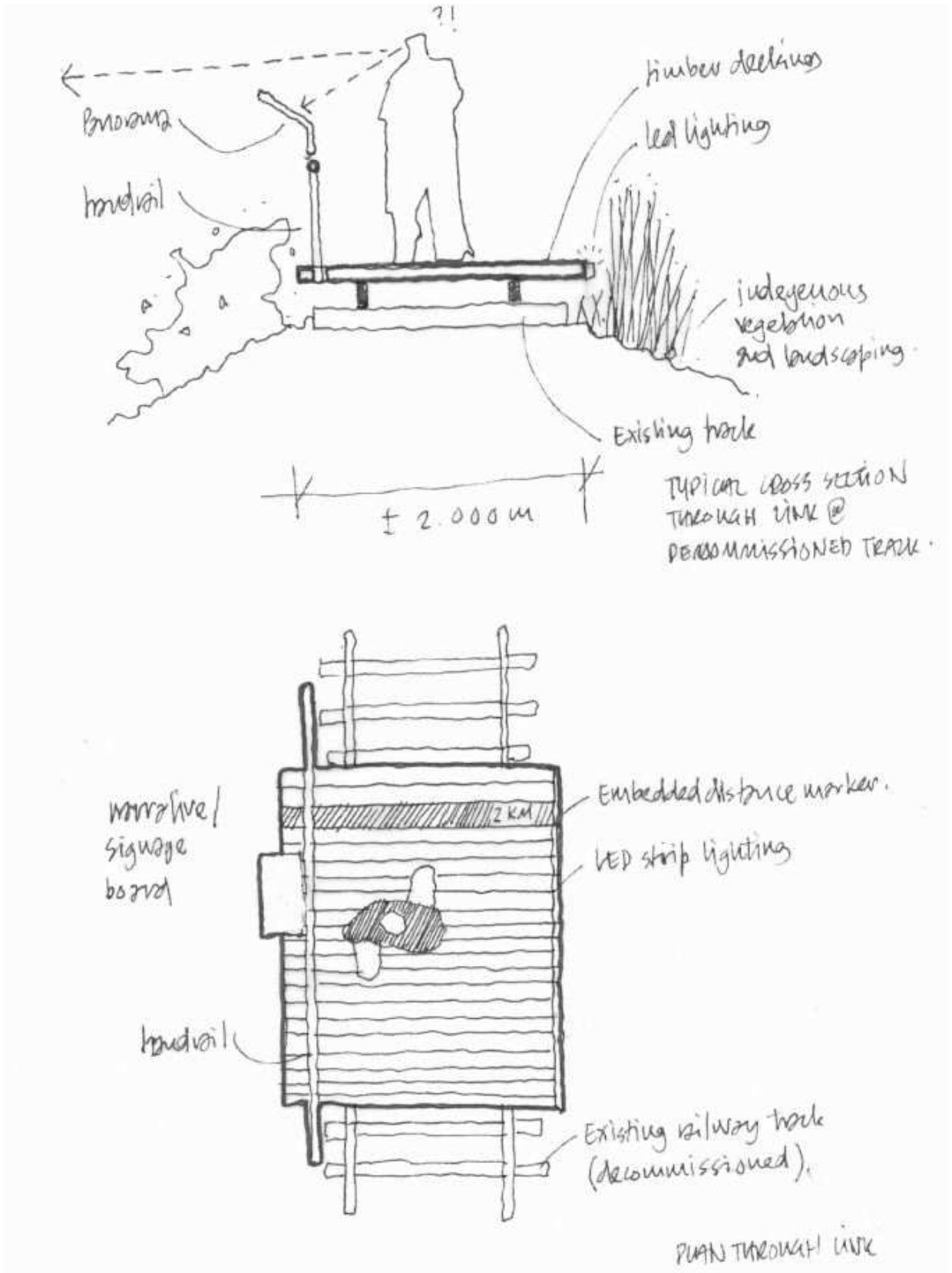
- KEY**
- * Point of interest
 - Existing decommissioned station
 - Pause space
 - Existing infrastructure - road
 - Existing infrastructure - path
 - Existing infrastructure - railway track

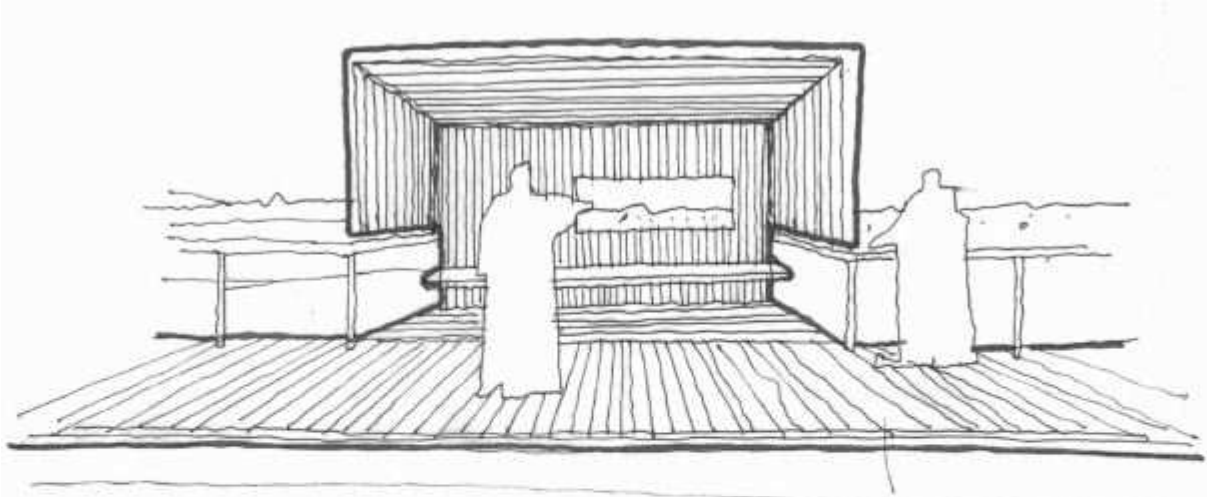
DESIGN THINKING

WALKWAY. Making a circuit for a walk and exploration of Kynsna's natural beauty and landscape through the appropriation of the existing decommissioned railway tracks and paths.

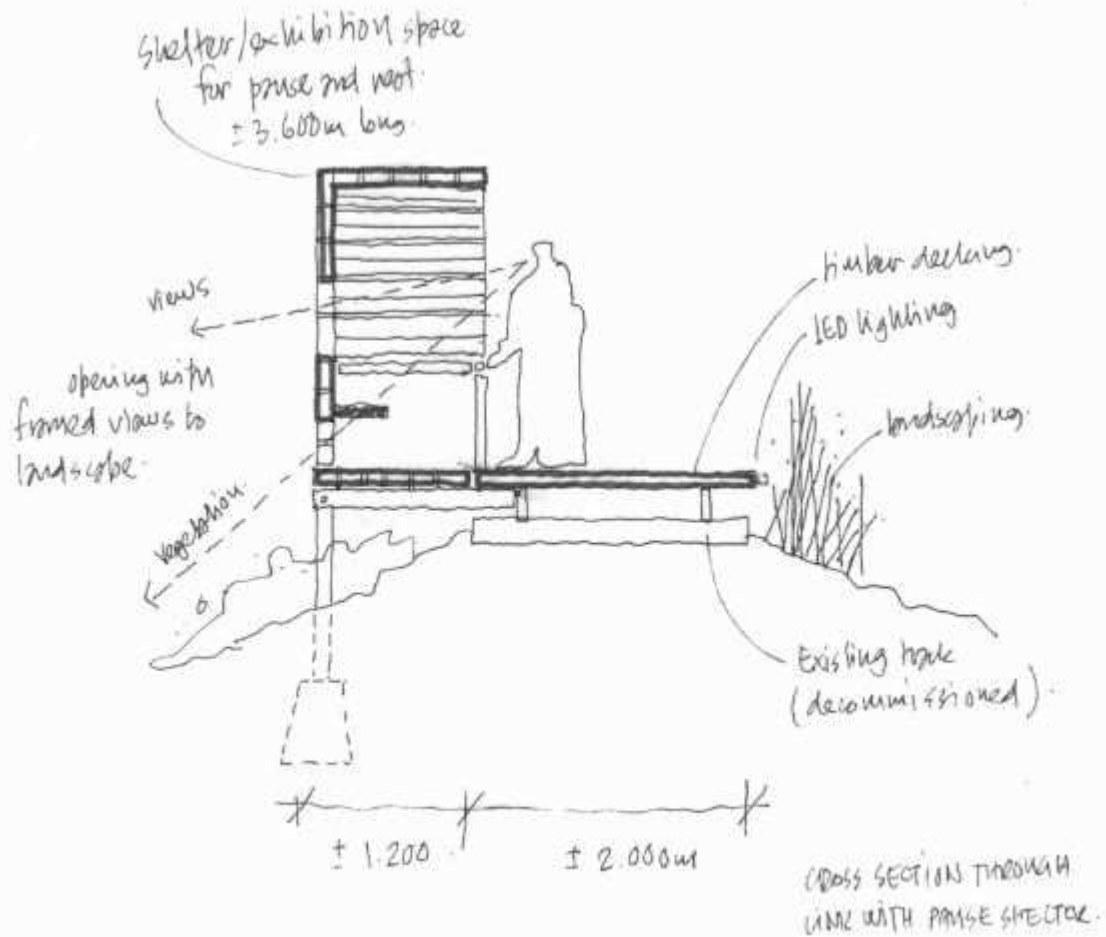
PAUSE. Pause spaces are created which relate to previous stations, sites of significance and important places to 'take-in' particular natural aspects of the area.

ADDITIVE. The physical components are seen as a kit-of-parts whereby standardised elements are assembled to create more complex arrangements.





SCHEMATIC SKETCH ALONG
LINE WITH PRASE STRUCTURE

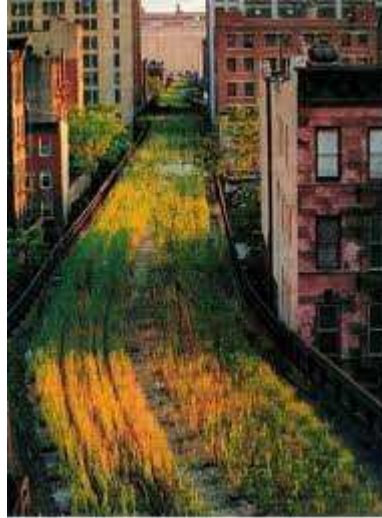


REFERENCES

The Highline New York



Before



After



Other



WAYFORWARD

To move forward with the proposal UrbanWorks and Parts & Labour would like to propose that a Pre-feasibility Study is conducted to determine the viability of the project and the communities' engagement.

On completion of the study a cost breakdown can be established to develop a Feasibility Study.

The cost of the pre-feasibility study will include the following

- site visit including transport, accommodation and disbursements
- preliminary stakeholder engagements
- Technical assessment of the architectural infrastructure
- Cost estimation and breakdown for a complete Feasibility Study into the Knysna Link and the development of a Business Plan.

R40 000

The Feasibility Study will formulate the following works ;

- Project timelines and milestones
- Stakeholders Engagement
 - Municipality
 - Provincial Government
 - SAN Parks Board
 - Landowners
 - TRANSNET
 - Local community (recreation and commuting)
 - Knysna Tourism
 - Greater Community (George, Brenton-On-See)
 - Professional team (architects/urban designer, QS, researchers, tourism consultant, heritage consultant, engineer, surveyor, artwork co-ordination)
- Establishment of potential funding partners (public and private sector)
- Defining budget (indicative – procurement, construction / operating expense, maintenance,)
- Impact Assessments (Environment and Heritage)
- Community Survey
- Development of a 1:1 prototype of the link along the train track
- Development of an integration strategy into the existing Municipal policies and urban framework.
- Research in to the development of a suitable entity, with representation from various community sectors (Municipal, Recreational, Historical, SA Roads etc), to manage the Link and the Open Air Museum.
- Development of a Phasing strategy (12 month publicity and event scenario / small intervention).
- Development of a tender strategy.

PRELIMINARY STAKEHOLDERS

Executive Mayor Mayor Georlene Wolmarans mayor@knysna.gov.za (0)44 302 6534

Municipal Manager Ms Lauren Waring lwaring@knysna.gov.za 27 (0)44 302 6590

Director of Planning and Development Mr Mike Maughan-Brown mmaughan-brown@knysna.gov.za
(0)44 302 1634

Manager Economic Development Ms Ilse van Schalkwyk ivanschalkwyk@knysna.gov.za 044 302 1646

Transnet / Outeniqu Choo Tjoe - Kobus.Volschenk@transnet.net 044 8018 288

Knysna Tourism info@knysna-info.co.za 044 382 5510

Knysna Sports and Rec Jan van Wageningen secretary@knysnasprtsschool.co.za 044 384 0759

Knysna Plett-Herald Anoeschka von Meck snoek@groupeditors.co.za 044 382 1185

Belvidere Homeowners Association bhoa@cxsa.co.za (044) 387-1950